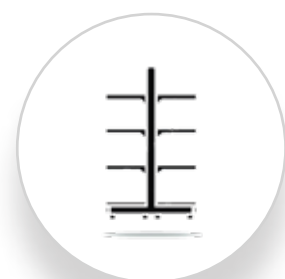




# INDIA'S #1 COMPANY FOR RETAIL STORE FIXTURES & SPECIALISED SOLUTIONS

**instor**  
KIDER INDIA PVT. LTD.



**DISPLAY**



**MOVEMENT**



**STORAGE**

## **Instor**

Kider India Pvt. Ltd.

We are the largest manufacturer and exporter of retail fixtures and industrial solutions in India. We provide functional, innovative and premium range of display, storage and movement solutions for modern retail stores, warehouses and various industrial applications. From design, and manufacturing to installation, service and care, we are your single-point partner for all retail store needs.

Our widest range of pre-made and customised solutions with the highest space utilization technology, most durability, economical pricing and functional designs help you deliver the best customer experience at every touch point and grow your retail footprint.

Our products pass through toughest tests and are lab certified to give you best quality, long lasting durability and beautiful aesthetics.

From small Kirana stores to large chain stores, we have done stores for clients with a single location and clients with hundreds of locations.

■ Solutions for various segments

Kirana Stores	Sports & Fitness	Footwear
Supermarkets	Consumer Electronics	Home Furnishings
Hypermarkets	Consumer Durables	Experience Centers
General Stores	Luxury	Experience Zones
Pharmacy	Apparels & Fashion	Speciality Stores
Stationery & Toys	Automotive	Industrial Applications





# ■ DISPLAY





## SHELVES AND RACKS

- ✓ Highest load bearing capacity
- ✓ Various configurations in custom sizes
- ✓ More storage in limited space
- ✓ High durability and anti-corrosive
- ✓ Easy to adjust and modify layouts
- ✓ Available in various materials





## DISPLAY



## MOVEMENT



## STORAGE





## DISPLAY



## MOVEMENT



## STORAGE





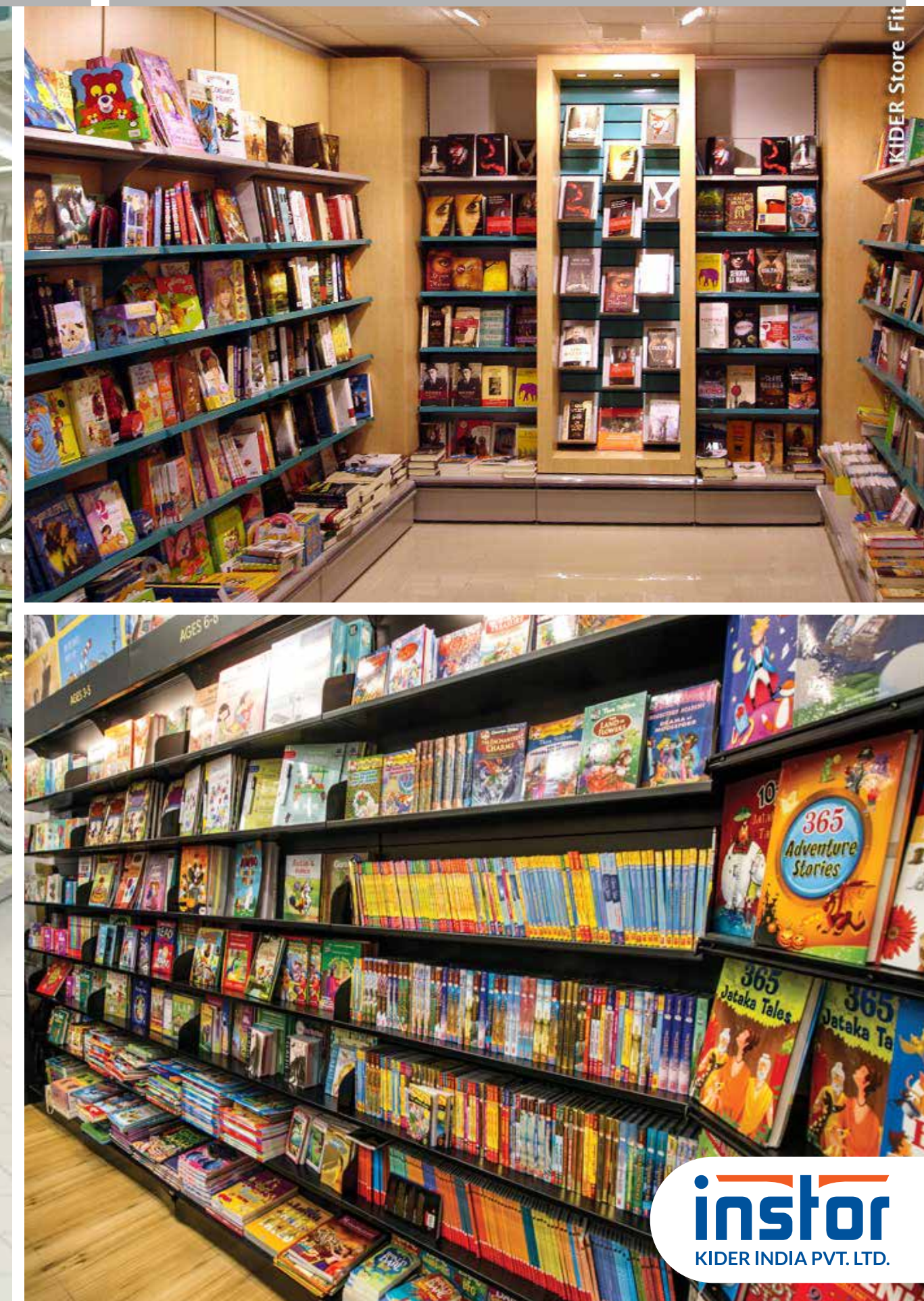
## DISPLAY



## MOVEMENT



## STORAGE







## WALL UNITS

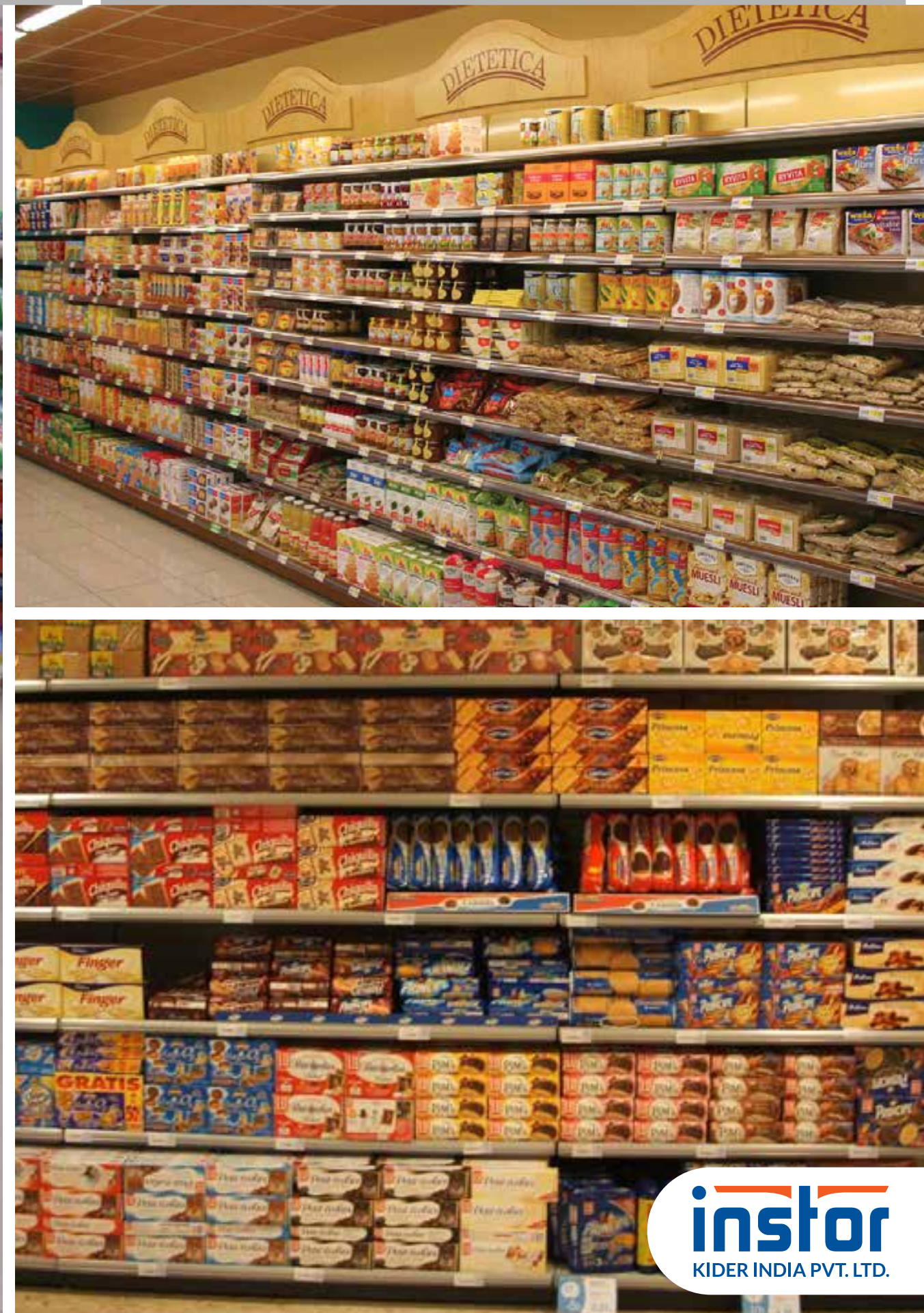
- ✓ Variety of plain and perforated back panels
- ✓ Effective space utilisation
- ✓ Easy to adjust and make changes
- ✓ Configured for various load capacities



## DISPLAY

## MOVEMENT

## STORAGE





## DISPLAY



## MOVEMENT



## STORAGE



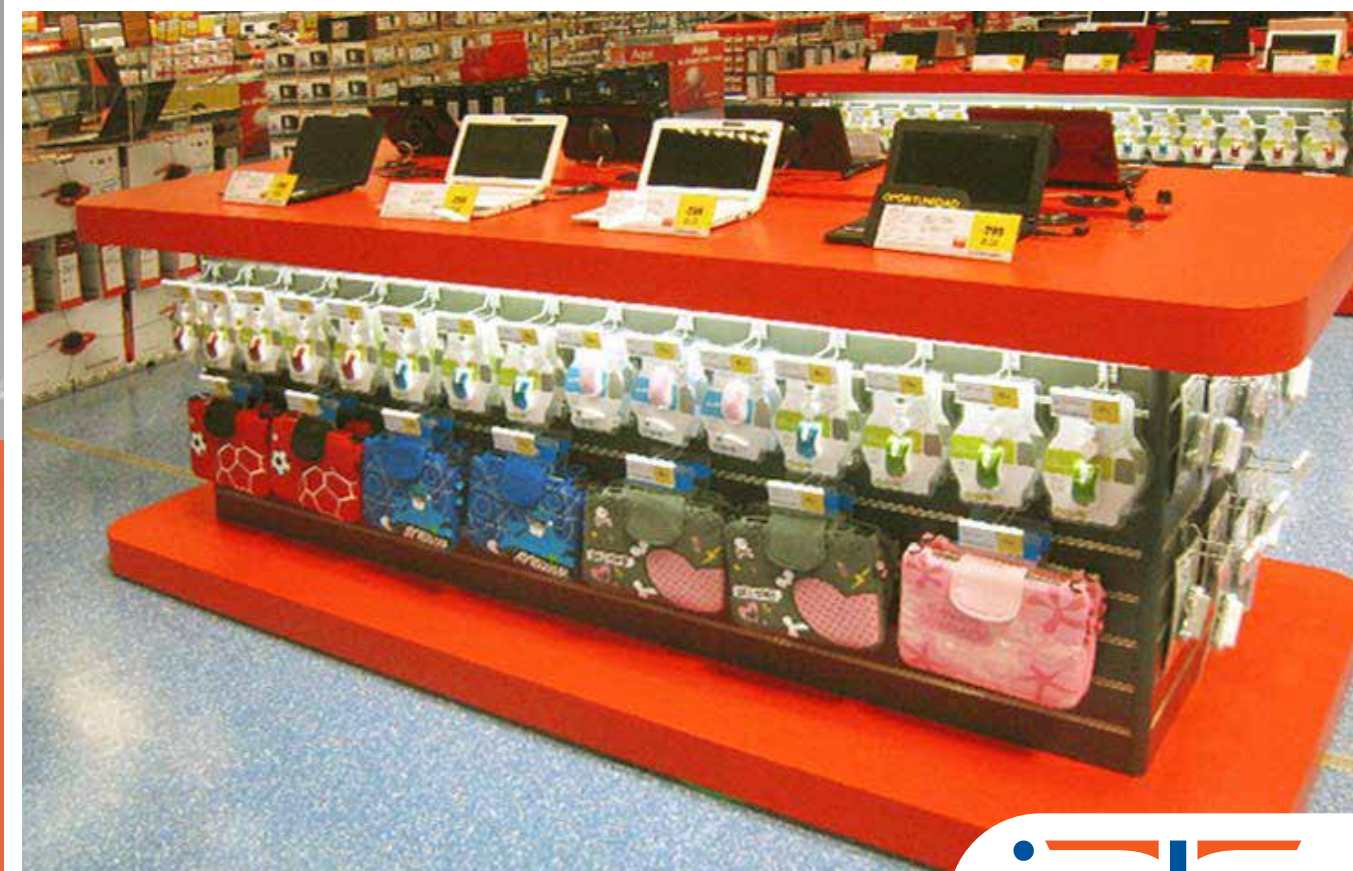




# GONDOLA RACKS

- ✓ Wall, centre and end gondola racks
- ✓ Standard and custom sizes
- ✓ Easy to adjust
- ✓ Variety of materials, colours and finishes
- ✓ Unique designs for specific and universal uses





## EXPERIENCE & DISPLAY COUNTERS

- ✓ Available in glass, wood and metal
- ✓ Custom designs and sizes
- ✓ Variety of finishes and colours
- ✓ Display cum storage units





## PODIUMS

- ✓ Available in wood or metal
- ✓ Used for light and heavy-duty products
- ✓ Customizable lengths and heights
- ✓ Various podium accessories available



# IMPULSE UNITS

- ✓ Checkout / Billing counter impulse racks
- ✓ 360 degree impulse stands
- ✓ Portable
- ✓ Hangers & accessories
- ✓ Variety of materials, colours and finishes





# FRUITS & VEGETABLE RACKS

- ✓ Single sided or gondola options
- ✓ F&V Heaper
- ✓ Available in metal and wood
- ✓ Available in various sizes and bay widths
- ✓ Weighing scale counter option available





## DISPLAY



## MOVEMENT



## STORAGE





## DISPLAY

## MOVEMENT

## STORAGE





# ACCESSORIES

- ✓ Easily display all types of merchandise
- ✓ Sturdy fittings adapt to any existing products
- ✓ Works well with convenience stores that offer a variety of products







# ■ MOVEMENT



# CHECKOUT / BILLING COUNTERS

- ✓ Monitor stand & keyboard tray
- ✓ Scanner housing hand
- ✓ EDC machine for express checkout
- ✓ Fake note detector stand
- ✓ Telescopic divider to manage customers at the billing counter
- ✓ A bag holder for immediate packaging of goods











## SHOPPING BASKETS

- ✓ Made of premium quality plastic material
- ✓ Available in different colours
- ✓ Applicable to all departmental stores





# SHOPPING CARTS

- ✓ Modern structure
- ✓ Resistant to corrosion
- ✓ Easy to use and maintain
- ✓ High strength
- ✓ Stain-free surface





# GOODS MOVEMENT TROLLEYS

- ✓ Saves space, increases maneuverability, eases transportation
- ✓ High-quality wire & excellent welding avoids damage to the stored material
- ✓ 200-1000 Kg load bearing capacity
- ✓ Convenient push handle to move the trolley
- ✓ 2 fixed, 2 swivels braked castors to move/stop a trolley







# ■ STORAGE



# STORAGE RACKS

- ✓ High-grade materials make shelves tough and durable
- ✓ Special powder coating makes shelves corrosion resistant
- ✓ Easy to adjust, interchange and add new layers for extra storage





# PALLETS

- ✓ Available in wood, metal and plastic materials
- ✓ Supports loads of up to 1000 kg
- ✓ Easy to load and unload goods in the warehouse
- ✓ Can be customised for different sizes and configurations







## STORAGE LOCKERS

- ✓ Customised in different sizes for a specific environment
- ✓ From a single door to four door options
- ✓ Powder coated for corrosion resistance
- ✓ Strengthened doors with ventilation and rubber buffers
- ✓ Different styles of lock options available



# METAINERS

- ✓ Metal: MS with Zinc Plating / Powder Coating
- ✓ One side door and fully collapsible
- ✓ Storage capacity up to 300-1000kgs
- ✓ Used for bulk material handling storage
- ✓ Hydraulic trolley usage capability. Can be easily moved by forklift.
- ✓ Also available with Wheels (2 Fixed 2 Swivel)







## PAKTAINERS / ROLL CAGES

- ✓ Easy to store. Quick to handle. Great to display
- ✓ High quality steel wires to avoid damage to stored goods
- ✓ Applications for both front-end as well as back-end







## METAL CAGES

- ✓ Sturdy base structure made up of steel wire rod
- ✓ Foldable shelf with two & three sides closed
- ✓ For bulk material handling & material movement
- ✓ Applications for both front-end as well as back-end





**We help you deliver the best shopping experience, increase sales & get highest returns on investment.**

## ■ About Us

There is more to our approach than just measuring your store and supplying fixtures. With a team of 400+ employees, we have been on the forefront of the transformative change in the retail and warehouse industry. Having delivered products for more than 5000 stores worldwide, we understand your unique requirements and what it takes to setup a retail outlet for delivering a type of experience that gives you a competitive edge and higher profits.





# India's #1 Company for Retail Store Fixtures & Specialised Solutions

Our 360-degree solutions help you deliver the best to your customers at every touch point and grow your retail footprint. We fully embrace the “Make in India” initiative and stand behind everything we build.



**5000+**

Stores Completed & Counting

**100-1,00,000 SQ. FT.**

Size of stores we provide  
premium quality fixtures for

**30,00,000 SQ. FT.**

Total Space Covered With  
Our Modern Fixtures & Solutions

**4,00,000 SQ. FT.**

Modern Factory with Automation  
& Robotic Manufacturing

**PAN INDIA**

Installations and quality customer  
service across India

**₹100 CR**

Investment in state-of-the manufacturing  
and R&D to create innovative products.



# Tested & Certified

Instor products pass through toughest tests and are certified to give you:

- **Best quality**
- **Long lasting durability**
- **Beautiful aesthetics**



## ■ Series of tests we put our products through

1. Bend Test (ISO1519): No paint peel off
2. Cupping (ISO 1520) & Cross Cut Test (ISOI 2409): Ensure perfect paint adhesion
3. Impact Test (ISO 6272): No impact on the paint against weight drop
4. Nugget Test For Welding Measures: Ensure perfect bonding of shelf and omega
5. Salt Test (ASTM B117): 1000 hours of salt test against blistering, corrosion and rusting.  
Certified in an independent lab





## Why Instor

Businesses choose Instor solutions over local fabricators and other suppliers for unique designs, customer-friendly in-store flow, best utilisation of space and long lasting durability. Our customers see higher return on investments and increased customer retention.



### Unique Designs

Our designs make your store look unique, attractive, customer friendly and most functional



### High Aesthetic Value

With India's most advanced powder coating unit, you get lasting durability even after 3000 days.



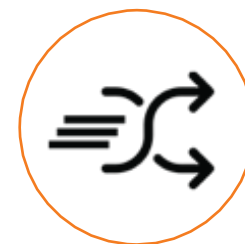
### Best Space Utilisation

With our designs and fixtures, you are able to use the floor and wall space in the most effective and functional way



### Highest Load Bearing Capacity

Our unique UpRight base and designs give you the highest load bearing capacity in the industry, eliminating the need for extra storage, constant repairs and additional investments.



### Easy to Switch Layouts

With ever changing customer behaviours, and new product introductions, you need to modify layouts fast. Our EasySwitch feature allows you to easily and quickly make adjustments or change layouts



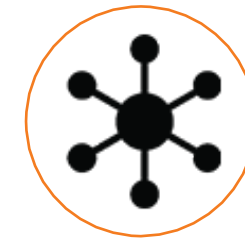
### Tested & Lab Certified

We run our products through many tests to ensure durability and high resistance to corrosion and harsh conditions. Our products are lab certified to meet highest quality and durability standards.



### High Return on Investment

With lab certified durability, attractive designs, ease of shopping and best space utilisation, you get top returns on your investment.



### Single Point Execution

From concept and design to build, install and care; our team of experts executes every step flawlessly.



### We Care

From a tiny screw to racks and counters, we stand behind everything we manufacture. We are always there to support and serve you.



“

*After evaluating products from local providers and China for our store, I can say that Instor's products' quality is far superior and best in the market. Their team helped set up two floors store in just 12 days from start to finish. I highly recommend Instor to anyone looking to set up small or large retail outlets.*

- Anil Rathod. Managing Director. **Bagfull Mart**



# OUR CLIENTS

Our clients range from small kirana stores to large chain stores.

We have done stores for clients with a single location and clients with hundreds of locations.





# Our Infrastructure

Instor's state-of-the-art manufacturing facility is spread across 9 acres with modern and sustainable manufacturing machinery and processes.

**Modern & sustainable manufacturing**

**India's most advanced powder coating unit**

**Robotics manufacturing for ultimate precision**

**Large-scale production capacity**

**World's best machinery for 100% automation**

**Environment - friendly plant, machinery & processes**



**Automatic, CNC controlled sheet punching machine**



**CNC controlled, automatic sheet bending machine**



**Fully conveyerised automatic powder coating plant**



**Robotic arm welding shelf joints**



# WE ARE INSTOR

**110% COMMITTED TO YOUR SUCCESS.**  
Extra 10% is our willingness and commitment  
to go out of the way for you.

Go with  
**India's #1 choice.**  
Do not compromise  
with your profits.

GET A FREE **QUOTATION**

Call +91 98 220 09838 | +91 91 300 90428 | +91 2137 678000  
[www.instorindia.com](http://www.instorindia.com)

**instor**  
Kider India Pvt. Ltd.  
New Gat 584/2, Koregaon Bhima,  
Pune 412 216 INDIA