

Future Of Luxury Retail

Redefined By Instor India

instor
luxe



Product Catalog 2025



Post Based Apparel Fixture

*A Modern Luxury Store Fixture For
Premium Apparel Displays*

Key Highlights:

- Slot-free front for a seamless, sleek look
- Simple installation with flexible expansion
- Modular design with shelf & hang-bar combinations
- Mirror-finish for a polished presentation





Ideal Application:

Designed for luxury fashion retailers to showcase apparel collections with sophistication & style. Ideal for enhancing the visual appeal of high-end retail spaces.



Dimensions:

600 (W) x 495 (D) x 2400 (H) mm



Specifications-

Materials Used: SS pipes & sheets
Finish: Mirror finish on SS

Frame Based Apparel Fixture

*Luxury Backlit Fixture With A
Sleek, Contemporary Edge*



Key Highlights:

- Clean, slot-free front with integrated backlit LEDs
- Elegant frame for a modern display
- Durable, dark grey powder-coated finish



Ideal Application:

Ideal for premium & designer stores that want to feature apparel collections with eye-catching backlit effects & a minimalist look.



Dimensions:

900 (W) x 500 (D) x 2400 (H) mm



Specifications-

Materials Used: MS pipes & sheets
Finish: Dark grey powder-coated

Browser Gondola

*Innovative, Premium Gondola For
Versatile Merchandise Displays*

Key Highlights:

- Modular & expandable
- Height-adjustable hang-rails
- Robust black powder-coated finish





Ideal Application:

Perfect for large-format stores & premium outlets to showcase mixed merchandise like apparel, handbags, & footwear in a modular, organized way.



Dimensions:

785 (W) x 1325 (D) x 1500 (H) mm
(Max Height: 1540 mm)



Specifications-

Materials Used: MS pipes & sheets
Finish: Black powder-coated

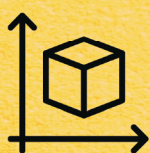
Height Adjustable Hangrail

*Space-Saving, Elegant Solution
For Compact Luxury Displays*



Key Highlights:

- Minimal footprint
- Height-adjustable hang-rails
- Brushed SS accents



Dimensions:

1000 (W) x 450 (D) x 1700 (H) mm



Specifications:

Materials Used: SS pipes & MS sheets

Finish: Black powder-coated & brushed SS finish

Ideal Application:

Designed for upscale retail outlets needing a compact display for apparel & accessories that blends functionality with refined aesthetics.



Grill Based Shoe Fixture

Premium Grid Display For Modern Footwear Presentation

Key Highlights:

- Grid system for flexible merchandising
- Glow box highlights featured products
- Laminated wooden shelves



Ideal Application:

Ideal for premium shoe & sportswear stores to display a wide range of footwear with bold, creative styling.



Product Size-

1000 (W) x 415 (D) x 2000 (H) mm



Specifications:

Materials Used: Wood & MS
Finish: Laminates for wood, dark grey powder-coated finish for metal



Post Based Shoe Fixture

*Compact, Elegant Fixture For
Innovative Footwear Displays*



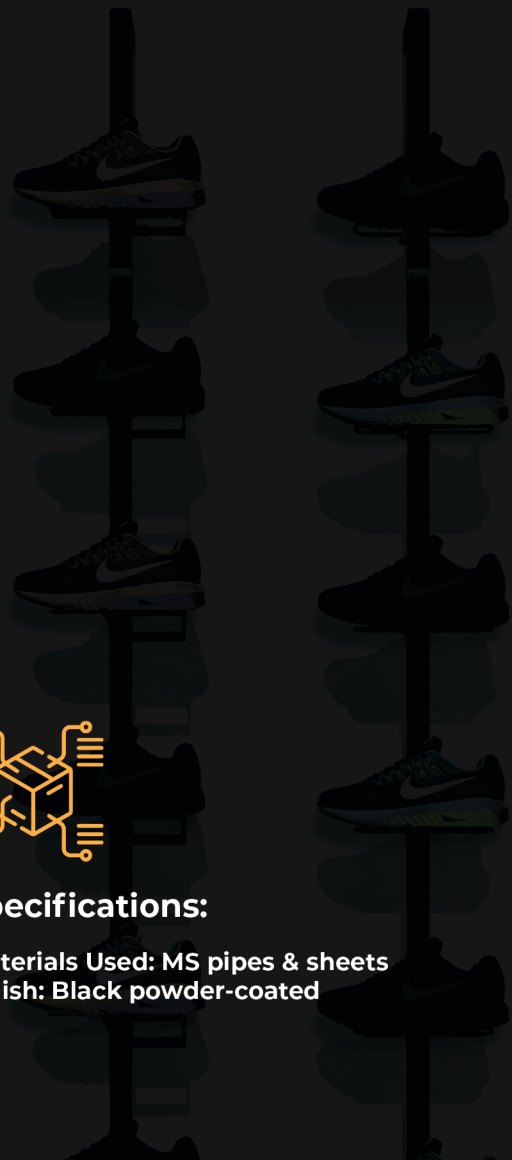
Key Highlights:

- Single-post modular design
- Adjustable shoe holders
- Price tag holders included



Ideal Application:

Best for pop-up shops & boutique stores that need a compact, modern way to showcase footwear collections.



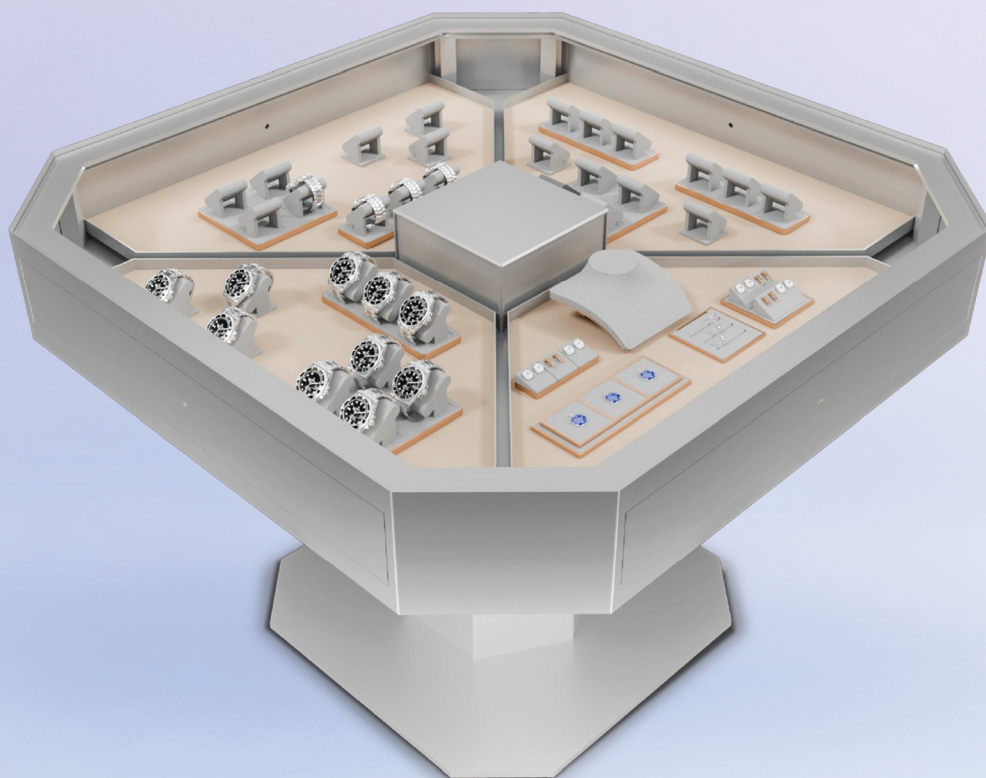
Product Size-

- Pipe: 30 (W) x 80 (D) x 1880(H) mm
- Shoe Holder: 80 x 180 mm



Specifications:

Materials Used: MS pipes & sheets
Finish: Black powder-coated



Watch Fixture

*Luxury Counter Fixture For Modern
Watch & Jewellery Displays*

Key Highlights:

- Symmetrical design with 360° drawer access
- Integrated LED lighting
- Sturdy construction



Dimensions:

- 1000 (W) x 1000 (D) x 715 (H) mm



Specifications:

Materials Used: MS pipes & sheets
Finish: Black PU paint finish



Ideal Application:

Perfect for luxury watch counters & jewellery sections, offering a modern, illuminated display with easy-access storage.



Belt Display Unit

Elegant & Organized Fixture For Premium Belt Displays

Key Highlights:

- Perforated sheet for brackets
- Mirror & wood storage box included
- Height-adjustable rails

Ideal Application:

Great for retail stores focused on leather goods & accessories, offering a neat, premium presentation for belts.



Dimensions:

1200 (W) x 540 (D) x 1290 (H) mm



Specifications:

Materials Used: Wood & MS

Finish: Laminates for the wood, dark grey powder coating for the metal



Cosmetics Fixture

*Refined, Innovative Fixture For
High-End Beauty Displays*



Key Highlights:

- Modular shelves with under-shelf lighting
- Hidden slotting system
- Luxurious marble finish with copper accents



Dimensions:

640 (W) x 380 (D) x 2400 (H) mm

Ideal Application:

Tailored for beauty & cosmetic stores & pharmacies that seek a premium, illuminated shelving system for cosmetics & personal care items.



Specifications:

Materials Used: Wood & MS
Finish: Marble-finish laminate for wood, copper finish for metal





Cosmetics Fixture

*Sleek, Premium Display With
Full-Length Elegance*

Key Highlights:

- Curved edges & sleek copper finish
- High-gloss white laminate
- Space for product branding



Ideal Application

Best for high-end cosmetics & skincare displays, offering a bold, full-height solution with branding opportunities.



Dimensions:

600 (W) x 385 (D) x 3000 (H) mm



Specifications:

Materials Used: Wood & MS

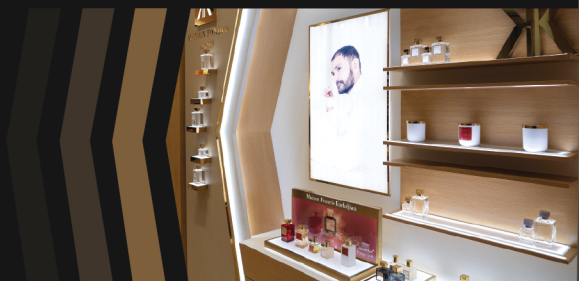
Finish: Copper finish for metal, high-gloss white laminate for wood





Perfume Fixture

*Compact, Elegant Display For
Premium Fragrance Presentation*



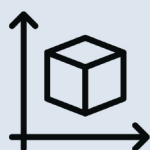
Key Highlights:

- Bottom-lit shelves
- Copper-finish with sharp design lines
- Compact & space-efficient



Ideal Application:

Perfect for luxury perfume counters, combining compact elegance with integrated lighting for maximum impact.



Dimensions:

900 (W) x 900 (D) x 1260 (H) mm



Specifications:

Materials Used: MS pipes & sheets
Finish: Copper-finished metal

Customizable:

Yes—lighting, size & materials are adjustable.



Nesting Table Set

Stylish, Multi-Functional Tables With A Luxurious Finish



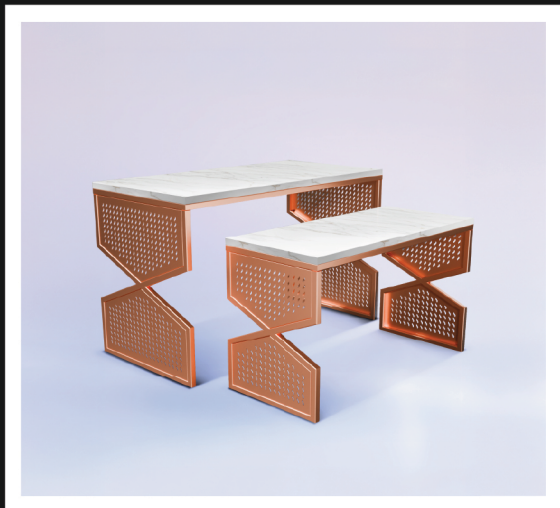
Key Highlights:

- Marble-finish top with copper touch
- Dual table sizes for flexible arrangements



Dimensions:

- Large: 600 (W) x 1200 (D) x 750 (H) mm
- Small: 450 (W) x 1000 (D) x 600 (H) mm

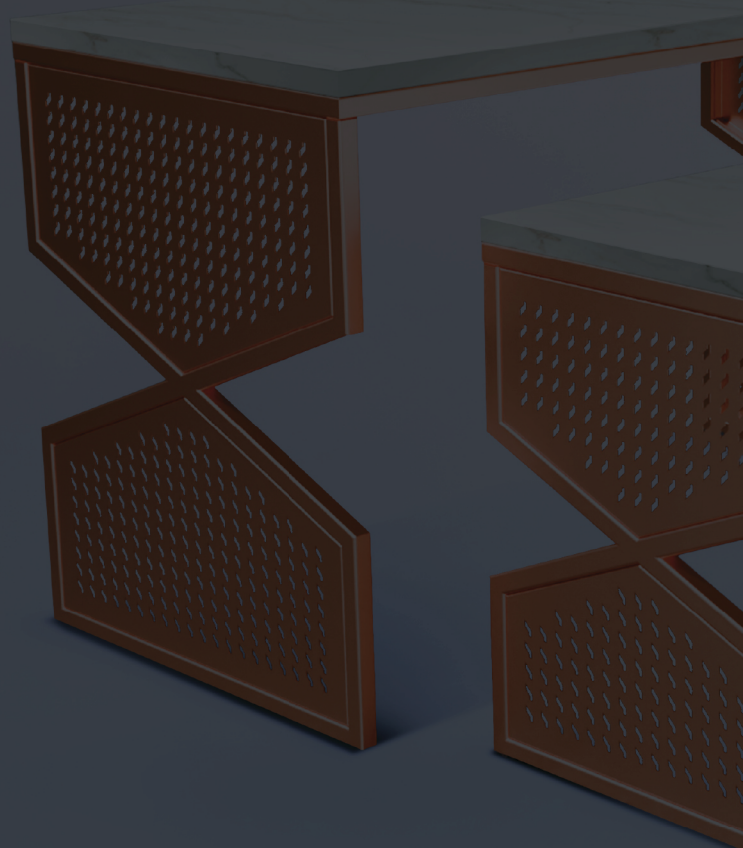


Specifications:

Materials Used: Wood & MS
Finish: Copper finish for metal, marble laminate finish for wood

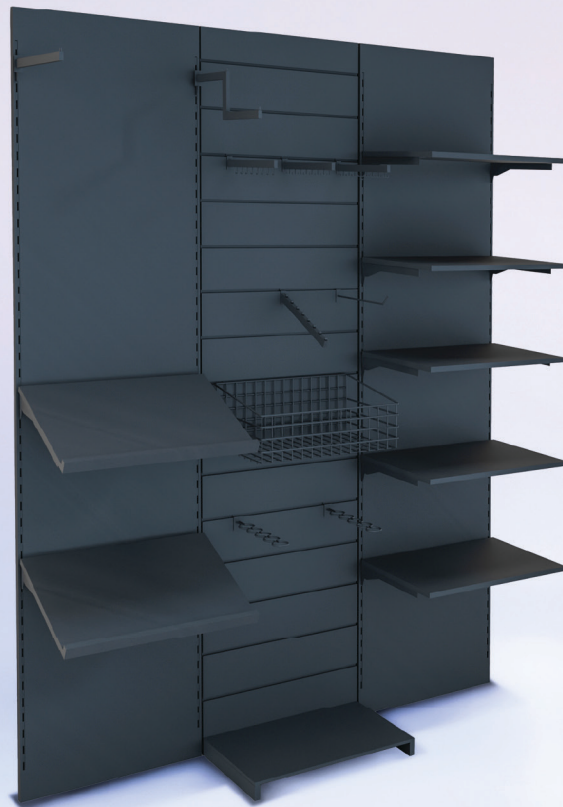
Ideal Application:

Versatile for central feature areas in luxury retail stores, ideal for showcasing curated collections or seasonal highlights.



Panel Based Fixture

*Innovative, Modular Slat-Wall
Fixtures For Modern Retail*



Key Highlights:

- Slat-wall system for flexible merchandising
- Modular & expandable



Dimensions:

1800 (W) x 470 (D) x 2400 (H) mm



Specifications:

Materials Used: MS pipes & sheets
Finish: Black powder-coated

Ideal Application:

Perfect for premium apparel & sportswear stores needing versatile, reconfigurable display solutions that grow with changing collections.



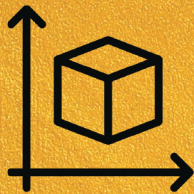
Luggage Fixture

*Elegant Corner Fixture For
Premium Luggage Displays*



Key Highlights:

- Corner-fitting design
- Under-shelf lighting
- Space-efficient



Dimensions:

1400 (W) x 1400 (D) x 2400 (H) mm

Ideal Application:

Designed for luxury luggage & travel accessory retailers to showcase products in a well-lit, corner-fitted solution.



Specifications:

Materials Used: Wood & MS
Finish: Laminates for wood, black powder-coated finish for metal



Hand Bag Fixture

*Luxury, Space-Efficient Display
For High-End Handbags*

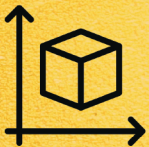
Key Highlights:

- Inward corner design with integrated lighting
- Concealed storage cabinet



Ideal Application:

Great for luxury handbag stores needing a corner solution that combines high-impact lighting with ample concealed storage.



Dimensions:

1700 (W) x 850 (D) x 2400 (H) mm



Specifications:

Materials Used: Wood & MS

Finish: White laminate for wood, copper/rose gold powder coating for metal





instor
luxe

Instor India Pvt. Ltd.

New Gat 584/2 Koregaon Bhima,
Taluka Shirur, Pune-412 216, INDIA

✉ sales@instorindia.com

☎ +91 91753 68952

Follow us [!\[\]\(e3f8612927870f2e0f9f5989e6dd3064_img.jpg\)](#) [!\[\]\(a86c7d1c9cb81c81614634a31267440d_img.jpg\)](#) [!\[\]\(ce158fc5e55633398941d0898ae45661_img.jpg\)](#) [!\[\]\(6f77f2588732dff582d5f470675e762f_img.jpg\)](#) [!\[\]\(802fbc25d869d680d37bfef9949fa598_img.jpg\)](#)

Copyright © 2025 Instor India Pvt. Ltd. All right reserved.