

# Redefining Retail Spaces With Modern Store Fixtures & Solutions

[www.instorindia.com](http://www.instorindia.com)





# Transforming Retail Spaces

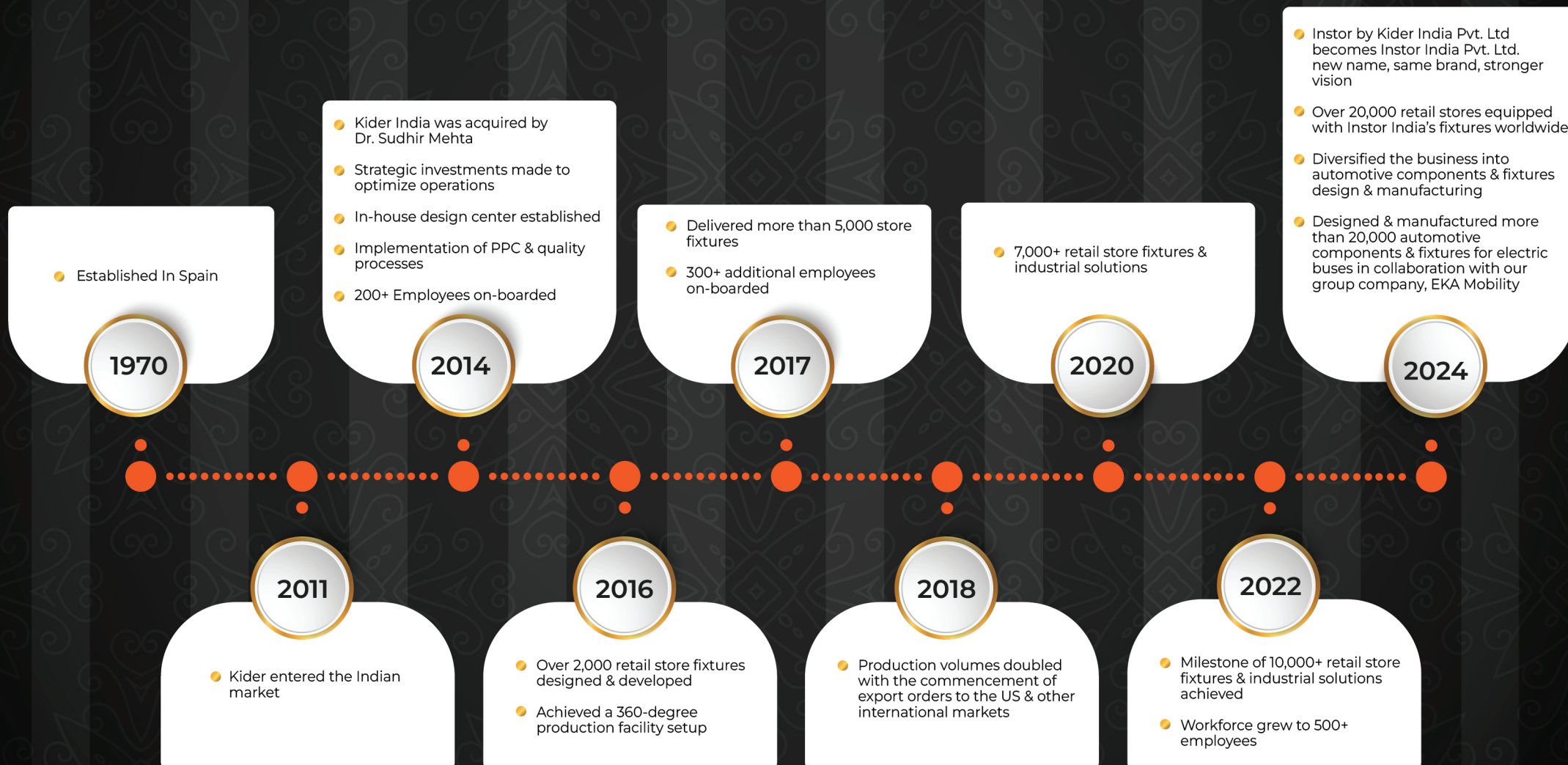


**India's #1** manufacturer & designer of modern retail store fixtures, industrial solutions, & automotive components.

We deliver high-quality fixtures & solutions for domestic & international markets, backed by a robust supply chain & the 'Make in India' initiative.



## Our Growth Journey





## Our Customers





# Why Choose Instor India's Retail Store Fixtures?

- **1,00,00,000+ Sq. Ft.**  
Total space covered with our modern retail fixtures & growing
- **100 to 1,00,000 Sq. Ft.**  
Fixtures for retail stores of all sizes
- **20,000+**  
Retail stores equipped with Instor India's fixtures worldwide
- **Comprehensive solution** from design to manufacturing & installation
- **80,000+ Products**  
The largest library of retail store fixtures in India
- Manufacturing capacity **600 tonnes per month**
- **20,000+**  
Automotive components manufactured for electric buses
- **9-Acre (4,00,000 Sq. Ft.)**  
Advanced facility for retail, industrial, & automotive solutions
- **Pan-India presence** offices & service network across India





# Our Range Of Modern Retail Fixtures

India's #1 company in designing, manufacturing & installing modern retail store fixtures



Customizable display fixtures to boost product visibility & customer engagement



Smart storage solutions designed to maximize space & streamline organization



Efficient movement systems that optimize workflow & enhance operational efficiency





## DISPLAY



## STORAGE



## MOVEMENT





# Exclusive Range Of Retail Store Fixtures

instor

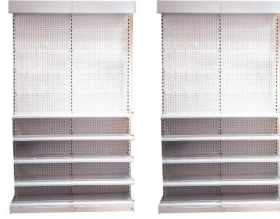
## Display

Custom-engineered innovative display solutions for impactful product showcasing



### Display Racks & Shelves

- Customizable
- Maximized visibility
- Space optimization
- Durable & high quality
- Flexible & modular display



### Display Wall Units

- Customizable
- Vertical space optimization
- Quick installation
- Configurable load bearing
- Enhanced visibility



### Experience & Display Counters

- Integrated display + storage
- Modular & customizable
- Durable materials
- Multiple finishes
- Ideal for tech & lifestyle



### Display Podiums

- Material options
- Load flexibility
- Customizable heights & lengths
- Corrosion-resistant
- Portable



### Impulse Display & Storage Units

- 360° visibility
- Portable
- Variety of materials
- Customizable sizes
- Wide range of accessories



### Fruits & Vegetable Display Racks

- Gondola configurations
- Efficient heapers
- Durable materials
- Custom sizes
- Optional weighing scale counter



### Display Accessories

- Variety of merchandise
- Durable fittings
- Easy installation
- Customizable
- Seamless integration



## Display Fixtures



Hexagon Staples



Bakery Units



Oil Bins



Chocolate Racks



Drawer Unit With Top Cabinets



Promotion Tables



Heapers



Staple Bins



Electronics Display Racks



Fruits & Vegetables End Units



Dry Fruits Container & Step Tables



Staple Bin With Wooden Covers



Football Racks



Gondola Rack With End Units



Impulse Units



Baggage Counters



Wall Racks



Masala Units



## Display Fixtures



Cosmetic Racks



Tabular Bins



Apparel Gondolas



Cosmetic Gondolas



Wooden Shelf Wall Racks



Activity Book Racks



Crockery Racks



Computer Tables



Pharmacy Counters



Showcase Without Side Panels



Display Units



Bakery Racks



LED Wall Units



Mobile Display & Counters



Laptop Tables



AC Wall Units



Crockery & Utensiles



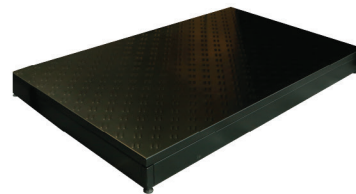
## Storage

Robust storage fixtures designed for efficiency & scalability



### Storage Racks

- Heavy-duty build
- Corrosion-resistant finish
- Adjustable & expandable shelves
- Quick setup & reconfiguration
- Ideal for warehouses & stockrooms



### Storage Pallets

- Wood, metal & plastic options
- 1,000 Kg load-bearing capacity
- Easy loading & unloading
- Custom sizes & configurations
- Durable, long-lasting design



### Storage Lockers

- Customizable configurations
- Single to multi-door options
- Corrosion-resistant powder coating
- Strengthened doors with ventilation
- Multiple locking mechanisms



### Metainers

- High-grade metal construction
- Collapsible & space-saving
- 300-1,000 Kg load-bearing capacity
- Forklift & trolley compatible
- Optional wheels for mobility



### Pactainers / Roll Cages

- Durable steel wire construction
- Smooth mobility with locking wheels
- Compact & space efficient
- Reduces product damage
- Suitable for front & back-end



### Metal Cages

- Strong steel wire base
- Foldable shelves for flexibility
- Bulk storage & transport ready
- Built for tough conditions
- Fixed & swivel wheel options



## Movement

Smart, durable solutions for seamless goods & customer movement



### Movement Solutions

- Smooth, efficient checkout with smart features
- Integrated monitor & keyboard tray
- Fast-scan barcode housing
- Slot for card payment machines
- Queue management divider
- Built-in bag holder



### Shopping Carts

- Sturdy steel wire frame
- Corrosion-resistant finish
- Smooth-rolling caster wheels
- High load-bearing capacity
- Low maintenance



### Shopping Baskets

- Tough yet light plastic
- Ergonomic, easy-grip handles
- Stackable for space saving
- Available in vibrant colors
- Ideal for all retail formats



### Goods Movement Trolleys

- High load-bearing capacity
- Lightweight & sturdy design
- Corrosion-resistant finish
- Ergonomic push handles
- Equipped with braked swivel casters

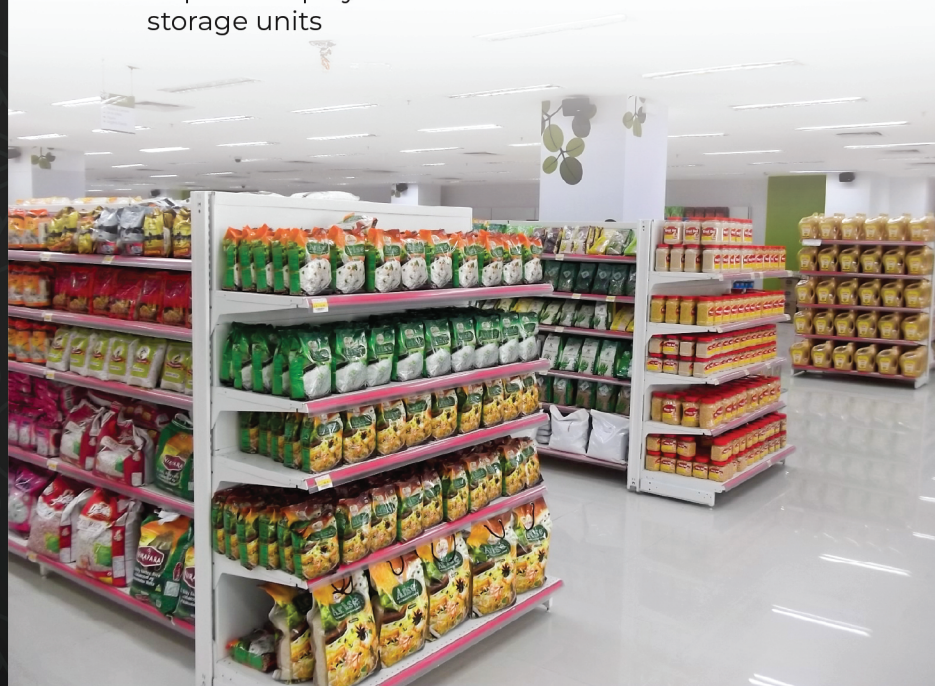




## Segments We Serve

### Grocery Stores/ Marts/ Kirana Stores

- Display wall units
- Gondola racks
- End racks
- Grain units
- Impulse display & storage units
- Billing or cash counters
- Shopping baskets
- Oil bins
- Grocery display racks



### Supermarkets & Hypermarkets

- Bakery racks
- Gondola racks
- Storage lockers
- Impulse display units
- Sports item display racks
- Footwear display racks
- Apparel racks & hanging units
- Supermarket grocery racks
- Vegetable & fruit display racks
- Toy display racks
- Crockery & utensil display fixtures
- Cosmetics racks & display unit
- Stationery & gifts display racks
- Shopping baskets & trolleys
- Display checkout counters





## Fruit & Vegetable Stores

- Rounded displays
- Wall racks
- Gondola racks
- Heapers
- Billing counters
- Express checkout
- Inclined F&V displays
- Baskets
- F&V display with 2 drawers
- Vegetable & fruit racks
- Trolleys
- Angular semicircular display with inclined basin
- Baggage counters
- F&V display shelving with mesh shelves



## Pharmacy & Healthcare Store Fixtures

- Display racks
- Medicine drawers
- End racks
- Pharmacy drawers
- Glass counters
- Cosmetic racks
- Billing counters
- Cabinets
- Gondola units





## Sports & Fitness Store Fixtures

- Wall units
- End units
- Bat holders
- Heapers
- Hooks
- Waterfall hangers
- Load bar hangers
- Ball hoppers
- Dump bin shelves
- Shoe brackets
- Fitness rolling racks
- Tube hangers
- Dump bins



## Books, Stationery & Toys Store Fixtures

- Gondola display racks
- Magazine stands
- Stationery display shelving systems
- Billing & checkout counters
- Display cum storage units
- Book display podiums
- Configurable display racks & shelves





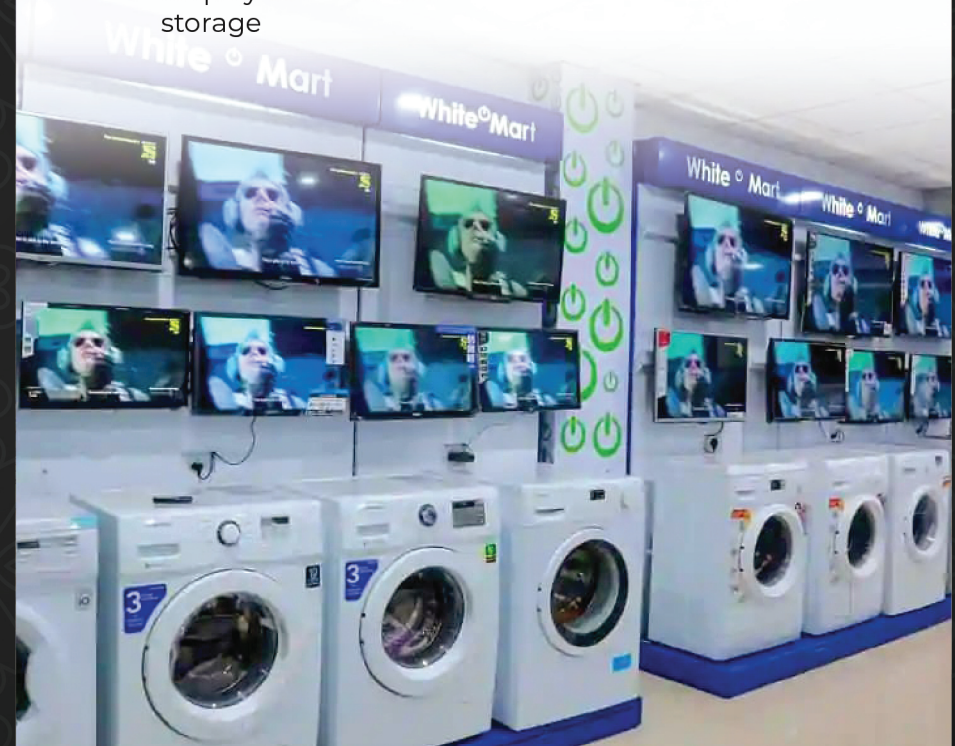
## Apparel, Fashion & Footwear Store Fixtures

- Wall racks
- Centre racks
- Wall bay units
- Sock stands
- Billing counters
- Express checkout
- Baskets
- Nesting tables
- Way browsers
- Footwear racks
- Footwear gondola
- Dump bin
- Accessories display fixtures
- Clothing display racks



## Electric & Home Appliances Store

- AC display wall units
- Experience zones
- Podiums
- Accessories
- Display counters with storage
- TV display units
- Mobile display counters
- Laptop display counters
- Home appliance & electronics display racks





## Specialty Stores

- Bakery & chocolate stores
- Fuel stations
- Wine & alcohol stores
- Home furnishing stores
- Crockery & utensils stores





# Introducing Luxury Store Fixtures

Our luxury store fixtures combine cutting-edge innovation with timeless elegance to create a premium retail experience. Designed with precision and functionality, these future-ready fixtures offer both aesthetic appeal and durability.

Perfect for high-end retail environments, they elevate the shopping experience while adapting to evolving consumer needs, providing a seamless blend of style and performance.

- **High-End Materials:** Only the finest quality materials used
- **Sculptural Design:** Elegant & unique, elevating the store's aesthetic
- **Seamless Integration:** Tailored to fit the exclusive needs of luxury brands
- **Craftsmanship Excellence:** Attention to detail in every fixture for flawless presentation
- **Exclusive Customization:** Personalization options to match distinct brand styles





# Premium Range Of Luxury Store Fixtures

instor  
luxe

## Post Apparel Fixture

Elegant fixtures designed for premium apparel displays with sleek, modern finishes.

- Premium material construction
- Sleek & modern design
- Easy installation & expansion
- Customizable display options
- Versatile & functional



## Frame Apparel Fixture

Modern fixtures designed to elevate apparel presentation with customizable features, perfect for luxury retail environments.

- Versatile shelves & hang-bars
- Sleek, slot-free design
- LED backlighting
- Easy installation
- Durable MS pipes, powder-coated finish



## Browser Gondola Fixture

Modular & unique Browser Gondola for dynamic & organized merchandise display.

- Versatile on-floor fixture
- Adjustable for different displays
- Ideal for apparel & accessories
- Expandable for changing stock
- Durable black powder-coated finish





## Hangrail Fixture

Flexible design for displaying apparel & accessories with adjustable rails.

- Premium material construction
- Sleek & modern design
- Easy installation & expansion
- Customizable display options
- Versatile & functional



## Grill Based Shoe Fixture

Flexible fixture design to display a variety of products with customizable options.

- Grid design for flexible product display
- Ideal for shoes, apparel & handbags
- Features display box for single shoe focus
- Glow box to highlight hero products
- Durable wood & MS materials with premium finishes



## Post Based Shoe Fixture

A unique, expandable post-based fixture for displaying shoes, bags & apparel with customizable attachments.

- Unique single post system for easy display
- Expandable with customizable attachments
- Ideal for shoes, bags & apparel
- Includes price tag holder for shoes
- Durable MS pipes with black powder coating

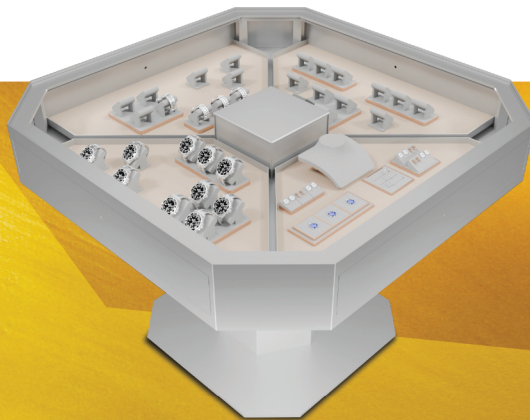




## Watch Fixture

A sleek, symmetrical watch fixture with LED lighting & accessible drawers, ideal for displaying watches, leather goods & jewellery.

- Symmetrical design for uniform display
- Accessible drawers on all sides
- LED lighting enhances product visibility
- Displays watches, leather goods & jewellery
- Black PU finish for sleek appearance



## Belt Fixture

A dynamic fixture with adjustable rails & customizable display options, designed for a clean & organized presentation of accessories.

- Perforated sheets for flexible bracket options
- Adjustable hang-rail heights
- Includes a mirror for enhanced display
- Wooden box for a clean, polished look
- Laminated wood with dark grey powder coating



## Cosmetics Fixture

A minimalist, modular fixture perfect for showcasing cosmetics & premium products with subtle lighting.

- Modular shelves for adjustable height display
- Clean, slot less front design for a sleek look
- Under-shelf lighting to highlight products
- Ideal for cosmetics, perfumes & small items
- Premium marble laminate & copper finish materials

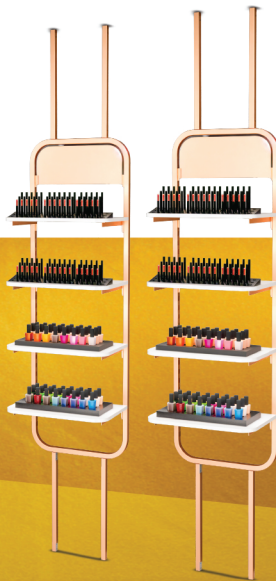




## Cosmetics Fixture II

A premium fixture designed to elegantly showcase cosmetics & small products while enhancing brand visibility.

- Ceiling-to-floor fixture for cosmetics & perfumes
- Curved edges for an elegant appearance
- Metallic copper finish for a premium look
- Slotting for ads & separate branding bracket
- Crafted from wood & MS with a high-gloss white laminate



## Perfume Fixture

An elegant fixture designed to showcase premium products with a stunning copper finish & bottom lighting.

- Designed for smaller, premium products like perfumes & cosmetics
- Bottom-lit shelves to highlight products
- Symmetric design for a sleek & balanced look
- Copper finish enhances the premium aesthetic
- Crafted with MS pipes & sheets for durability



## Nesting Table

A premium table fixture with a marble finish, perfect for showcasing products in a luxurious setting.

- Displays apparel, handbags, shoes & more
- Functions as a central podium in the store
- Elegant marble finish adds sophistication
- Symmetric design for a balanced look
- Premium copper & marble laminate finishes





## Panel Based Fixture

A sleek & versatile fixture designed to adapt to your retail needs with ease & efficiency.

- Easy installation process
- Highly expandable for future growth
- Versatile for displaying various products
- Modular design for flexible configurations
- Durable black powder-coated finish for a sleek look



## Luggage Bags Fixture

A versatile fixture designed to showcase & organize a variety of products, from luggage to accessories, with style & efficiency.

- Modular shelves for adjustable height
- Suitable for displaying luggage, bags & accessories
- Efficient use of corner space
- Customizable shelf materials & configurations
- Under-shelf lighting to enhance product visibility



## Handbag Fixture

A premium fixture that blends functionality with elegance, elevating the display of luxury fashion items.

- Modular shelves with adjustable height
- Ideal for displaying bags, heels & accessories
- Utilizes corner space effectively
- Customizable shelves & materials
- Features under-shelf lighting for enhanced display





# Quality Certificates

## We are an ISO certified company



### MANAGEMENT SYSTEM CERTIFICATE

Certificate no: 281386-2018-AQ-IND-UKAS	Initial certification date: 16 February 2019	Valid: 16 February 2022 – 14 February 2025
--	---	---

This is to certify that the management system of  
**Kider India Pvt. Ltd.**  
 Gat No. 584/2, Koregaon Bhima, Tal. Shirur, Dist. Pune - 412 216, Maharashtra, India

has been found to conform to the Quality Management System standard:  
**ISO 9001:2015**

This certificate is valid for the following scope:  
**Design and manufacture of engineering products (metallic sheets, tubes, & wires) for applications in retail fixtures and storage systems**

Place and date:  
Chennai, 11 February 2022



For the issuing office:  
DNV - Business Assurance  
RISMA, No. 16, GST Road, Alandur, Chennai -  
600 016, India






Shridevan Madhyath  
Management Representative

1864



Lack of fulfilment of conditions as set out in the Certification Agreement may render this Certificate invalid.  
 ACCREDITED UNIT: DNV Business Assurance UK Limited, 4th Floor, Vico Building, 30 Stamford Street, London, SE1 1LG, United Kingdom - TEL: +44(0) 203 916 4000.  
 www.dnv.co.uk



### MANAGEMENT SYSTEM CERTIFICATE

Certificate no: 281387-2018-AE-IND-UKAS	Initial certification date: 16 February 2019	Valid: 16 February 2022 – 14 February 2025
--	---	---

This is to certify that the management system of  
**Kider India Pvt. Ltd.**  
 Gat No. 584/2, Koregaon Bhima, Tal. Shirur, Dist. Pune - 412 216, Maharashtra, India


has been found to conform to the Environmental Management System standard:  
**ISO 14001:2015**


This certificate is valid for the following scope:  
**Design and manufacture of engineering products (metallic sheets, tubes, & wires) for applications in retail fixtures and storage systems**

Place and date:  
Chennai, 11 February 2022



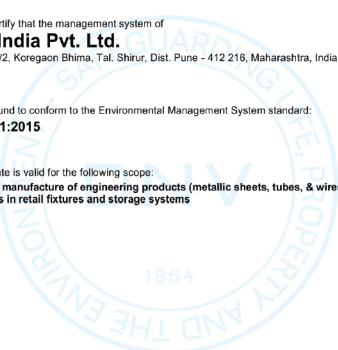
For the issuing office:  
DNV - Business Assurance  
RISMA, No. 16, GST Road, Alandur, Chennai -  
600 016, India





Shridevan Madhyath  
Management Representative

1864



Lack of fulfilment of conditions as set out in the Certification Agreement may render this Certificate invalid.  
 ACCREDITED UNIT: DNV Business Assurance UK Limited, 4th Floor, Vico Building, 30 Stamford Street, London, SE1 1LG, United Kingdom - TEL: +44(0) 203 916 4000.  
 www.dnv.co.uk



### MANAGEMENT SYSTEM CERTIFICATE

Certificate no: 281388-2018-AHSO-IND-UKAS	Initial certification date: 27 February 2019	Valid: 27 February 2022 – 26 February 2025
--	---	---

This is to certify that the management system of  
**Kider India Pvt. Ltd.**  
 Gat No. 584/2, Koregaon Bhima, Tal. Shirur, Dist. Pune - 412 216, Maharashtra, India


has been found to conform to the Occupational Health and Safety Management System standard:  
**ISO 45001:2018**

This certificate is valid for the following scope:  
**Design and manufacture of engineering products (metallic sheets, tubes, & wires) for applications in retail fixtures and storage systems**

Place and date:  
London, 26 January 2022



For the issuing office:  
DNV - Business Assurance  
4th Floor, Vico Building, 30 Stamford Street,  
London, SE1 1LG, United Kingdom





Erie Koek  
Management Representative

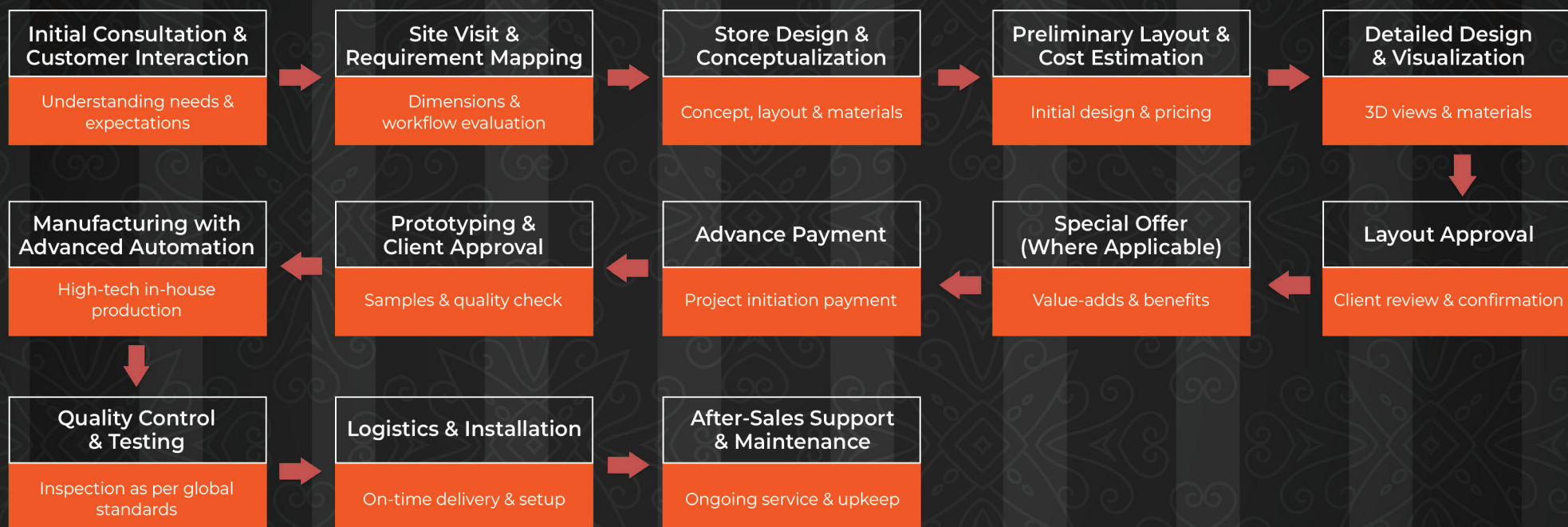
1864



Lack of fulfilment of conditions as set out in the Certification Agreement may render this Certificate invalid.  
 ACCREDITED UNIT: DNV Business Assurance UK Limited, 4th Floor, Vico Building, 30 Stamford Street, London, SE1 1LG, United Kingdom - TEL: +44(0) 203 916 4000.  
 www.dnv.co.uk



# How We Work





# How We Monitor Our Sales

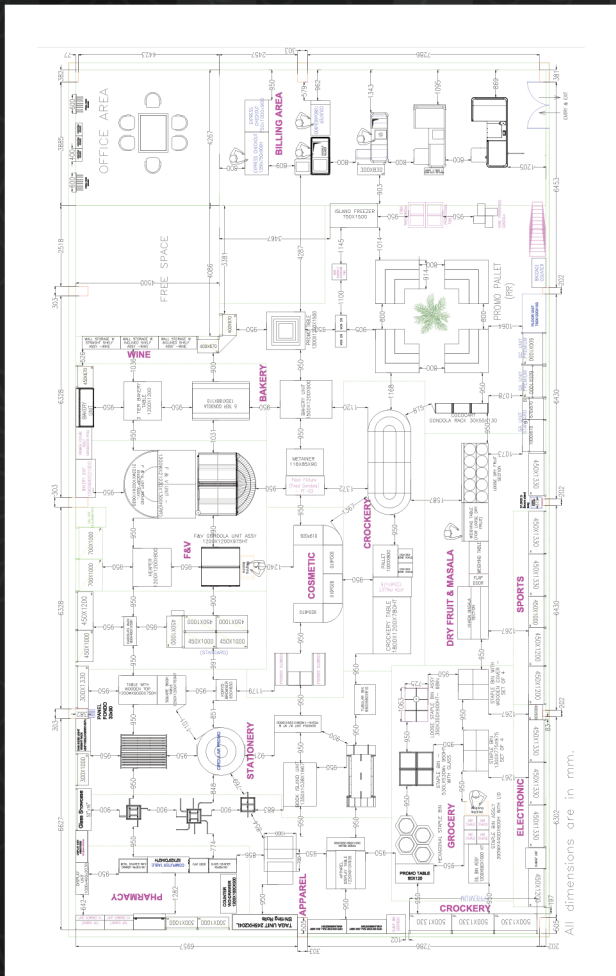
Sales performance is seamlessly monitored through robust internal software systems

PPC : ORDER PLAN VS ACTUAL TRACKING


Sr No	Offer Number	Order Transmission Date	Production		Powder Coating		Assembly		Packing		Order Dispatch Date	
			Planned Date	Actual Date	Planned Date	Actual Date	Planned Date	Actual Date	Planned Date	Actual Date	Given Date	Actual Date
1	P24-PA0078-B3	24-02-2025	28-02-2025	28-02-2025	01-03-2025	01-03-2025	03-03-2025	03-03-2025	04-03-2025	04-03-2025	04-03-2025	06-03-2025
2	P25-AT0037-A1	25-02-2025	28-02-2025	28-02-2025	01-03-2025	01-03-2025	03-03-2025	03-03-2025	04-03-2025	04-03-2025	05-03-2025	05-03-2025
3	P25-AT0043-A1	26-02-2025	03-03-2025	03-03-2025	04-03-2025	04-03-2025	05-03-2025	05-03-2025	06-03-2025	06-03-2025	07-03-2025	08-03-2025
4	P25-AT0052-A1	27-02-2025	28-02-2025	28-02-2025	01-03-2025	01-03-2025	03-03-2025	03-03-2025	04-03-2025	04-03-2025	05-03-2025	05-03-2025
5	P25-AT0051-A1	27-02-2025	01-03-2025	01-03-2025	03-03-2025	03-03-2025	04-03-2025	04-03-2025	05-03-2025	05-03-2025	06-03-2025	07-03-2025
6	P25-AT0055-A1	27-02-2025	28-02-2025	28-02-2025	01-03-2025	01-03-2025	03-03-2025	03-03-2025	04-03-2025	04-03-2025	05-03-2025	05-03-2025
7	P25-AT0056-A1	27-02-2025	28-02-2025	28-02-2025	01-03-2025	01-03-2025	01-03-2025	01-03-2025	03-03-2025	03-03-2025	03-03-2025	04-03-2025
8	P24-SA0175-B1	01-03-2025	07-03-2025	07-03-2025	10-03-2025	10-03-2025	12-03-2025	12-03-2025	14-03-2025	14-03-2025	15-03-2025	17-03-2025
9	P25-AT0045-A1	05-03-2025	07-03-2025	07-03-2025	10-03-2025	10-03-2025	12-03-2025	12-03-2025	14-03-2025	14-03-2025	15-03-2025	17-03-2025
10	P25-SL0011-A1	10-03-2025	12-03-2025	12-03-2025	13-03-2025	13-03-2025	14-03-2025	14-03-2025	15-03-2025	15-03-2025	15-03-2025	21-03-2025
11	P25-RL0077-A1	11-03-2025	14-03-2025	14-03-2025	15-03-2025	15-03-2025	15-03-2025	15-03-2025	17-03-2025	17-03-2025	18-03-2025	19-03-2025
12	P25-DP0127-A1	17-03-2025	18-03-2025	18-03-2025	18-03-2025	18-03-2025	18-03-2025	18-03-2025	18-03-2025	18-03-2025	18-03-2025	18-03-2025
13	P25-SA0084-A1	21-03-2025	25-03-2025	25-03-2025	27-03-2025	27-03-2025	29-03-2025	29-03-2025	03-04-2025	02-04-2025	03-04-2025	05-04-2025
14	P25-DP136-A1	21-03-2025	22-03-2025	22-03-2025	23-03-2025	23-03-2025	24-03-2025	24-03-2025	25-03-2025	25-03-2025	26-03-2025	26-03-2025
15	P25-AT0054-A1	22-03-2025	24-03-2025	24-03-2025	26-03-2025	26-03-2025	27-03-2025	27-03-2025	28-03-2025	28-03-2025	28-03-2025	29-03-2025
16	P24-SA0331-C1	25-03-2025	26-03-2025	26-03-2025	27-03-2025	27-03-2025	28-03-2025	28-03-2025	29-03-2025	29-03-2025	29-03-2025	29-03-2025
17	P25-DP129-A1	29-03-2025	02-04-2025	02-04-2025	04-04-2025	04-04-2025	07-04-2025	07-04-2025	09-04-2025	09-04-2025	10-04-2025	11-04-2025



# Develop a Compelling Store Concept








**Fresh Supermarket.**  
 3 reviews · 1 photo

★★★★★

Best quality products.

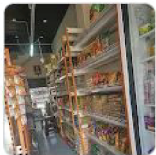
Higher load capacity & durable fixtures.





**Gaurav D**  
 Local Guide · 5 reviews · 8 photos

★★★★★


I recently purchased furniture from instor india pvt. Limited and had a fantastic experience! From the moment I visited their showroom , I was impressed with the variety of styles and designs available. Whether you're looking for something modern, classic, or minimalist, they have it all.





**Giriraj Batakulawar**  
 1 review · 2 photos

★★★★★


The assistance given by the company representative is helpful for my shop management , priyanka mam helped me and assessed for managing the design of the store i am thankful for their support




**bansi lande**  
 1 review · 1 photo

★★★★★

This Shelf is very attractive,beaty for our Shop it is very useful & Safe we are fully satisfied with the material which you have supplied to us.we are very thankful to Dattaji Patil ... [More](#)



## Here's What Our Clients Say About Us





Copyright © 2025 Instor India Pvt. Ltd. All right reserved



# How We Ensure The Quality Of Your Fixtures

## Daily quality inspection report

PRE-DISPATCH INSPECTION REPORT									
Project :		Pinnacle		Date: 15-04-2025		Doc No: IIS-QS-IP-001-0 Issue: 01 Rev: 01.04.25 Page: 1 of 1			
Part / Dwg No		E317010160812		SR. No :					
Revision no				Qty : 134 nos					
Material Grade		IHM, SAE 1010		Sample Size: 5nos					
Description WIRE MESH 820 X 380 MM									
Sr No	Parameter	Specification (mm)	*MT	Observation					OK / Not OK
				1.0	2.0	3.0	4.0	5.0	
1	DIM	380.0	MTF	381.0	382.0	380.0	382.0	380.0	OK
2	DIM	820.0	MTF	818.0	822.0	820.0	819.0	822.0	OK
3	DIM	40.0	VC	40.5	40.3	40.5	40.6	40.5	OK
4	DIM	98.0	VC	98.2	98.3	98.6	98.4	98.1	OK
5	DIM	104.0	VC	103.5	103.6	104.3	104.7	104.3	OK
6	DIM	30.0	VC	30.1	30.2	30.1	30.2	30.2	OK
7	DIM	51.0	VC	50.8	50.6	50.7	51.3	51.1	OK
8	DIM	141.0	VC	141.6	141.5	141.6	141.2	140.6	OK
9	Horl wire dia	5.0	VC	5.0	5.0	5.0	5.0	5.0	OK
10	Vert wire dia	5.0	VC	5.0	5.0	5.0	5.0	5.0	OK

MTF-Measuring tape, HG-Height gauge, VC-Vernier Caliper, MM-Micrometer  
Note: Inspection done as per sampling plan & record noted for 5nos

REMARK - 100% material is inspected by inserting diameter 12mm gauge through out the length of rail-820mm

\* REWORK / REJECTION DETAILS -

Approved By: Anil Chavan

PRE-DISPATCH INSPECTION REPORT									
Project :		Pinnacle		Date: 15-04-2025		Doc No: IIS-QS-IP-001-0 Issue: 01 Rev: 01.04.25 Page: 1 of 1			
Part / Dwg No		B312010166011		SR. No :					
Revision no				Qty : 1892 nos					
Material Grade		E34, STANDARD IS 1079		Sample Size-100nos					
Description PASSENGER SEAT PEDESTAL RAIL									
Sr No	Parameter	Specification (mm)	*MT	Observation					OK / Not OK
				1.0	2.0	3.0	4.0	5.0	
1	DIM	925 ± 1	MTF	929.0	929.0	930.0	930.0	929.0	OK
2	DIM	15.0	HG	14.8	15.2	14.9	14.9	15.0	OK
3	DIM	15.0	HG	15.3	15.2	15.1	15.0	15.2	OK
4	DIM	12 ± 0.2	VC	11.9	12.2	12.2	12.1	12.2	OK
5	DIM	30.0	VC	30.2	30.1	30.1	30.0	30.2	OK
6	THK	2.0	MM	2.0	2.0	2.0	2.0	2.0	OK
7									
8									
9									
10									

MTF-Measuring tape, HG-Height gauge, VC-Vernier Caliper, MM-Micrometer  
Note: Inspection done as per sampling plan & record noted for 5nos

REMARK - 100% material is inspected by inserting diameter 12mm gauge through out the length of rail-820mm

\* REWORK / REJECTION DETAILS -

Approved By: Anil Chavan

PRE-DISPATCH INSPECTION REPORT									
Project :		Pinnacle		Date: 18-04-2025		Doc No: IIS-QS-IP-001-0 Issue: 01 Rev: 01.04.25 Page: 1 of 1			
Part / Dwg No		H31800A001021895		SR. No :					
Revision no		11		Qty : 200 nos					
Material Grade				Sample Size- 10 nos					
Description RAMP ASSEMBLY									
Sr No	Parameter	Specification (mm)	*MT	Observation					OK / Not OK
				1.0	2.0	3.0	4.0	5.0	
1	DIM	336.0	MTF	337.0	337.0	336.0	336.0	337.0	OK
2	DIM	346.0	MTF	346.0	345.0	347.0	346.0	347.0	OK
3	DIM	467.0	VC	468.0	467.0	468.0	466.0	467.0	OK
4	DIM	185.0	VC	185.14	184.35	185.05	184.98	185.19	OK
5	DIM	**8.6±0.5	VC	8.65	8.67	8.69	8.64	8.70	OK
6	DIM	390.0	VC	391.00	390.00	390.00	392.00	390.00	OK
7	DIM	270.0	VC	270.11	270.18	270.37	270.19	270.14	OK
8	DIM	77.0	VC	77.08	77.32	76.98	77.15	77.37	OK
9	Ramp sliding	Smooth	VI	OK	OK	OK	OK	OK	OK
10	Pin locking & unlatching	Smooth	VI	OK	OK	OK	OK	OK	OK

MTF-Measuring tape, HG-Height gauge, VC-Vernier Caliper, MM-Micrometer  
Note: Inspection done as per sampling plan & record noted for 5nos

REMARK - 100% material is inspected by pin locking/unlocking & tray sliding motion.

\* REWORK / REJECTION DETAILS -

Approved By: Anil Chavan

PRE-DISPATCH INSPECTION REPORT									
Project :		Pinnacle		Date: 11-04-2025		Doc No: IIS-QS-IP-001-0 Issue: 01 Rev: 01.04.25 Page: 1 of 1			
Part / Dwg No		B312010166011		SR. No :					
Revision no				Qty : 2292 Nos					
Material Grade		E34, STANDARD IS 1079		Sample Size- 115 Nos					
Description SINGLE SEAT PEDESTAL RAIL									
Sr No	Parameter	Specification (mm)	*MT	Observation					OK / Not OK
				1.0	2.0	3.0	4.0	5.0	
1	DIM	440 ± 1	MTF	441.0	441.0	440.0	440.0	441.0	OK
2	DIM	15.0	HG	15.0	15.1	14.9	14.9	15.0	OK
3	DIM	15.0	HG	15.2	15.2	15.2	15.0	14.8	OK
4	DIM	12 ± 0.2	VC	12.1	12.1	11.9	12.1	12.2	OK
5	DIM	30.0	VC	30.2	30.1	30.1	30.2	30.2	OK
6	THK	2.0	MM	2.0	2.0	2.0	2.0	2.0	OK
7									
8									
9									
10									

MTF-Measuring tape, HG-Height gauge, VC-Vernier Caliper, MM-Micrometer  
Note: Inspection done as per sampling plan & record noted for 5nos

REMARK - 100% material is inspected by inserting diameter 12mm gauge through out the length of rail-440mm

\* REWORK / REJECTION DETAILS -

Approved By: Anil Chavan



# How We Ensure The Quality Of Your Fixtures

## Daily quality inspection report

instor		Final Inspection Check List for Frame white Price Peg		Doc. No: KD-QAD/IV.0018 Issue No: 01 Date: 14/07/2020 Page 1 of 1	
PO No: 79184					
Part Name - Frame white Price Peg					
Kider Drg. No: KFI000A0104773					
Decathlon Drg. No: 1008334					
No.	Parameter	Specification	*MT	Check/Observation	Remark
1	Length	89	VC	89.2 89.2 89.1 89.3 89.2	
2	Dim.	63	AP	63.2 63.2 63.2 63.4 63.3	
3	Width	46	VC	46.2 46.3 46.4 46.2 46.4	
4	Dim.	29	VC	29.2 29.2 29.4 29.4 29.5	
5	Eng Wire Dia.	29	VC	29.4 29.4 29.8 29.6 29.6	
6	Wire Dia.	4	VC	4 4 4 4 4	
7	Dim.	17	VC	17.2 17.2 17.2 17.2 17.3	
8	Hook Dia.	4	VC	4 4 4 4 4	
9	All Spot welds	check for all spot welds of wire joints.	VI	OK OK OK OK OK	
10	Visual Defects	Free from dents, ding & chips across	VI	OK OK OK OK OK	
11	Coating thickness (DFT)	Structure- 80-110u Matt- 60 to 80u	DFT meter	82 85 110 115 120	OK
12	Color Shade	As per customer requirement	VI		
13	Cupping test	Cupping test should be done on 20.0mm ball diameter with upto 8mm depth.	VI		
14	Impact test	Acceptance norms as per specified by powder manufacturer	VI		
15	Bend test	Done on 25.0mm roller with 5mm inner radius to check or peel off of powder coat from surface.	VI		OK
16	Cross cut adhesion test	Make 'X' Shape cut by cross cutter of grid 1mmx1 line. No peel off should obs.	VI		
17	Visual Defects	Product should be free from rust, undercoat & dirt.	VI		
18	Unloading/stacking	Hook marks touch need to done before stacking & there should not be direct metal to metal contact while stacking.	VI		
19	Supplier mark	"I" punch mark As per located in drawing.	VI		

NOTE: \*MT- Measurement technique, MTP- Measuring Tape, VC- Vernier Caliper, VI- Visual, All single protector

Checked By: Approved By:

Welded face to face  
These 2 parts should be welded together PARALLEL  
Welded

Frame white peg

instor		Final Inspection Check List for 4 bikes hanger		Doc. No: KD-QAD/IV.0005 Issue No: 00 Date: 25/11/2019 Page 1 of 1		
PO No: 79206						
Part Name - 4 bikes hanger						
Kider Drg. No: KFI000A01027768H						
Decathlon Drg. No: 2121200						
Date: 20/02/24						
Qty: 32						
No.	Stages	Parameter	Specification	*MT	Check/Observation	Remark
1	Fabrication	Length	983	MTP	984 984 984 983 984	
2		Height	284.4	MTP	285 285 285 285 285	
3		All welds	Product should be free from rust, undercoat etc.	VI	OK OK OK OK OK	
4		Visual Defects	Free from dents, damage & scratches.	VI	OK OK OK OK OK	
5	Assembly	Knob-2Nos	M10x30	MTP	OK OK OK OK OK	
6		Nut weld-2Nos	M6	MTP	OK OK OK OK OK	
7	Powder coating	Plastic Tube-4Nos	O.D. 011 X 1.5 thk	VC	OK OK OK OK OK	
8		Coating thickness (DFT)	Structure- 80-110u Matt- 60 to 80u	DFT meter	85 115 120 115 95	
9		Color Shade	As per customer requirement	VI		
10		Cupping test	Cupping test should be done on 20.0mm ball diameter with upto 8 mm depth.	VI		
11		Impact test	Acceptance norms as per specified by powder manufacturer	VI		
12		Bend test	Done on 25.0mm roller with 5mm inner radius. No crack or peel off of powder coat from surface.	VI		OK
13		Cross cut adhesion test	Make 'X' Shape cut by cross cutter of grid 1mmx1 line. No peel off should obs.	VI		OK
14		Visual Defects	Product should be free from rust, undercoat & etc.	VI		
15	Supplier mark	Unloading/stacking	Hook marks touch need to done before stacking & there should not be direct metal to metal contact while stacking.	VI		
16		"I" punch mark	As per located in drawing.	VI		

\*MT- Measurement technique, MTP- Measuring Tape, VC- Vernier Caliper, VI- Visual

NOTE:

Checked By: Approved By:



# Production Planning & Control

## Planned vs Actual

PPC : ORDER PLAN VS ACTUAL TRACKING

Sr. No.	Offer Number	Order Transmission Date	Production		Powder Coating		Assembly		Packing		Order Dispatch Date	
			Planned Date	Actual Date	Planned Date	Actual Date	Planned Date	Actual Date	Planned Date	Actual Date	Given Date	Actual Date
1	P23-RL0151-B1	05/Apr	08/Apr	08/Apr	09/Apr	09/Apr	10/Apr	10/Apr	11/Apr	11/Apr	12/Apr	12/Apr
2	P24-SA0033-B1	09/Apr	11/Apr	11/Apr	13/Apr	13/Apr	15/Apr	15/Apr	16/Apr	17/Apr	15/Apr	17/Apr
3	P24-AT0049-A2	09/Apr	11/Apr	11/Apr	13/Apr	13/Apr	15/Apr	15/Apr	16/Apr	16/Apr	17/Apr	17/Apr
4	P24-CS0057-A1	10/Apr	12/Apr	12/Apr	15/Apr	15/Apr	16/Apr	16/Apr	17/Apr	17/Apr	20/Apr	18/Apr
5	P17-MB0027-D1	11/Apr	15/Apr	15/Apr	16/Apr	16/Apr	17/Apr	18/Apr	18/Apr	18/Apr	20/Apr	20/Apr
6	P24-AT0044-A1	15/Apr	16/Apr	16/Apr	18/Apr	18/Apr	20/Apr	20/Apr	21/Apr	21/Apr	25/Apr	25/Apr
7	P24-SA0033-C1	15/Apr	16/Apr	16/Apr	18/Apr	18/Apr	20/Apr	20/Apr	21/Apr	21/Apr	25/Apr	25/Apr
8	P23-RL0210-B1	15/Apr	17/Apr	17/Apr	18/Apr	18/Apr	20/Apr	20/Apr	21/Apr	22/Apr	21/Apr	22/Apr
9	P23-SA0180-B1	20/Apr	25/Apr	26/Apr	27/Apr	27/Apr	29/Apr	29/Apr	30/Apr	30/Apr	30/Apr	30/Apr
10	P23-AT0095-A1	25/Apr	27/Apr	27/Apr	29/Apr	29/Apr	02/May	02/May	03/May	03/May	04/May	04/May







Laser Cutting



Turret Punching



Bending



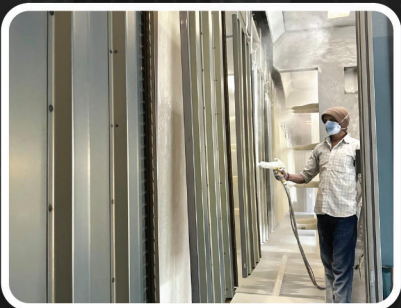
Roll Forming



Wire Section



Fabrication



Powder Coating



Assembly

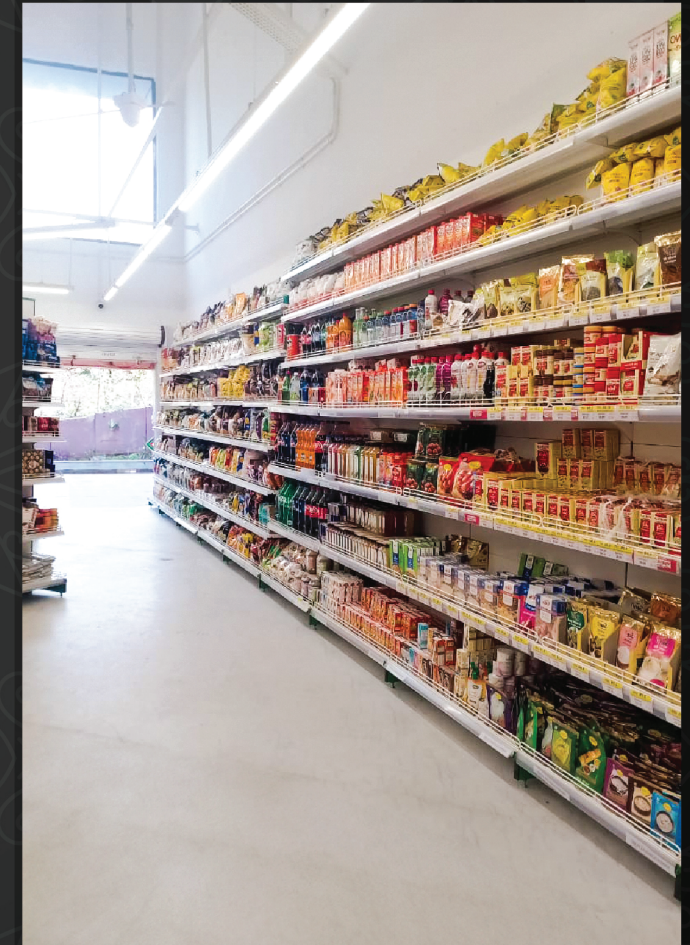


FG Packing

## How We Produce Your Perfect Fixture

Now we begin the process of making your highly customized order into a reality using our process driven approach











## Our Locations

Maharashtra

Assam

Bihar

Chandigarh

Chhattisgarh

Madhya Pradesh

Andhra Pradesh

Mizoram

New Delhi

Gujarat

Haryana

Jharkhand

Kerala

Uttar Pradesh

Odisha

Nagaland

Punjab

Rajasthan

Tamil Nadu

Telangana

Tripura

Uttarakhand

West Bengal

Sikkim

Arunachal Pradesh

Goa

Himachal Pradesh

Karnataka

Manipur

Meghalaya

### Instor India Pvt. Ltd.

New Gat 584/2

Koregaon Bhima, Taluka Shirur

Pune 412 216, INDIA

✉ [sales@instorindia.com](mailto:sales@instorindia.com)

☎ +91 9175368952

### Follow us

 Instor India  @instorindia

 Instor India  @instorindia

### Contact us



Scan To Know More



Scan WhatsApp QR Code

